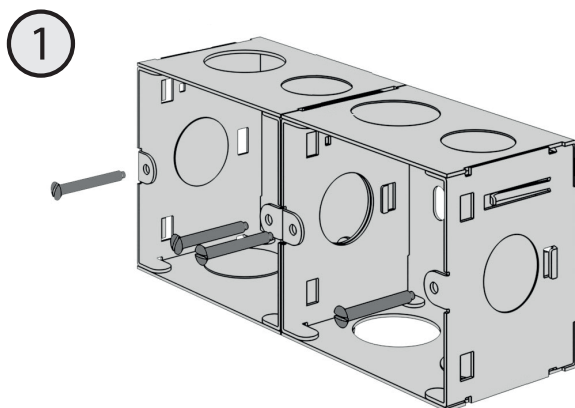
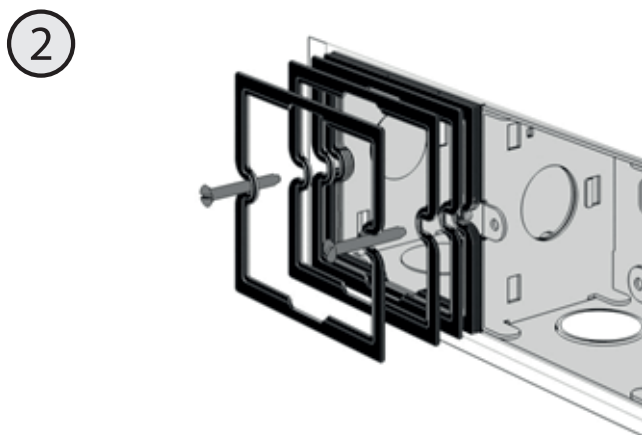


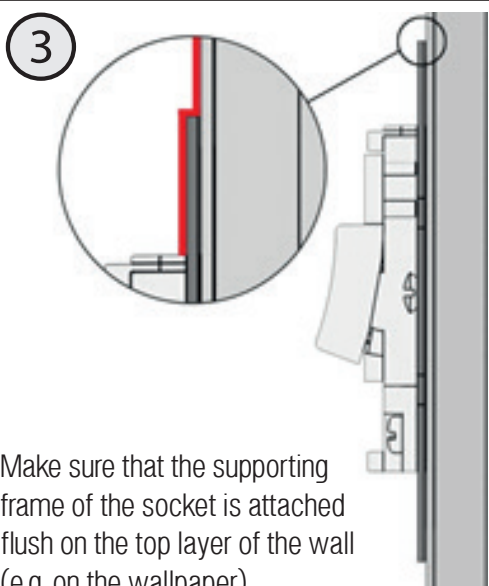
Installation manual



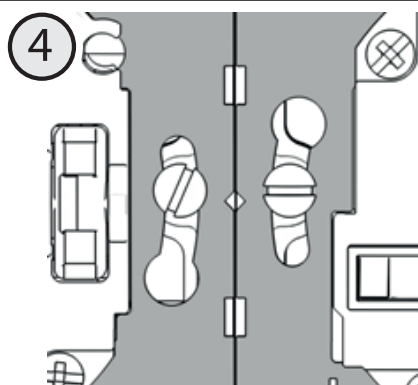
It is mandatory to mount the socket insert (device) on a flush mounted wall box according to DIN 49073 resp. JUNG wall boxes BS6042M-40 /-50.



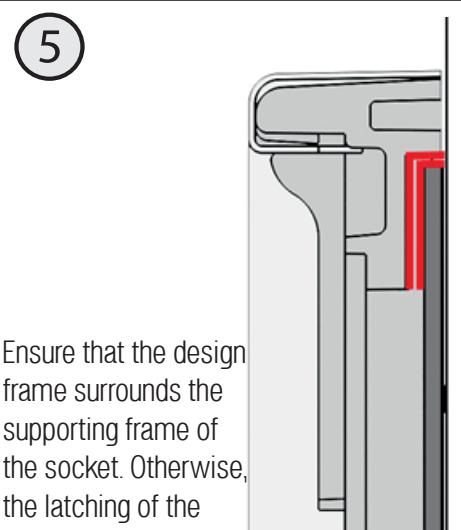
If the JUNG wall boxes are not installed flush with the wall surface, please use the Plaster compensation frame ref.no. PCF6042.



Make sure that the supporting frame of the socket is attached flush on the top layer of the wall (e.g. on the wallpaper).



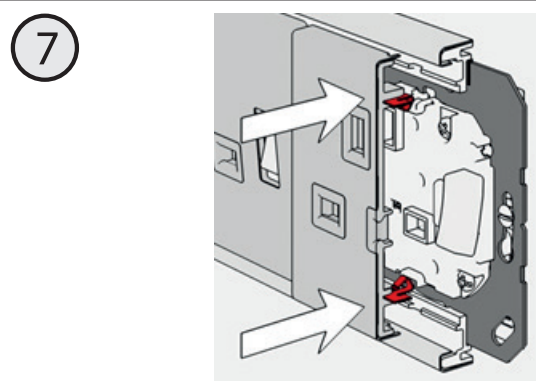
When combining multiple devices (e.g. socket and socket or switch) pay attention to the exact alignment. Take advantage of the notches to align the supporting frames.



Ensure that the design frame surrounds the supporting frame of the socket. Otherwise, the latching of the design cover is not possible.



Do not use other screws than the enclosed screws of the wall box to install the inserts. When using other screws, design frame rests against the screw heads. (ref. No. SCREW-30 /-50 /-70)



Press the design cover evenly on the socket insert. Take care, that you plug the spring terminals in the provided guides.