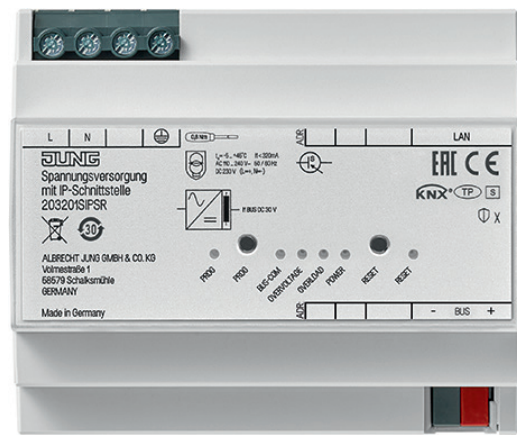


## Configuration tool



### IP router

Ref.-no.: IPR 300 SREG

### IP interface

Ref.-no.: IPS 300 SREG

### Power supply with IP interface

Ref.-no.: 20320 1S IPS R

**ALBRECHT JUNG GMBH & CO. KG**

Volmestraße 1  
58579 Schalksmühle  
GERMANY

Tel. +49 2355 806-0  
Fax +49 2355 806-204  
kundencenter@jung.de  
www.jung.de

## Configuration tool

This software simplifies the configuration of the device and provides detailed information about the device for error analysis.

If the device is in secure mode, the configuration tool can not connect to the device.

## 1 IP router, IP interface and power supply with IP interface

### 1.1 Device connection

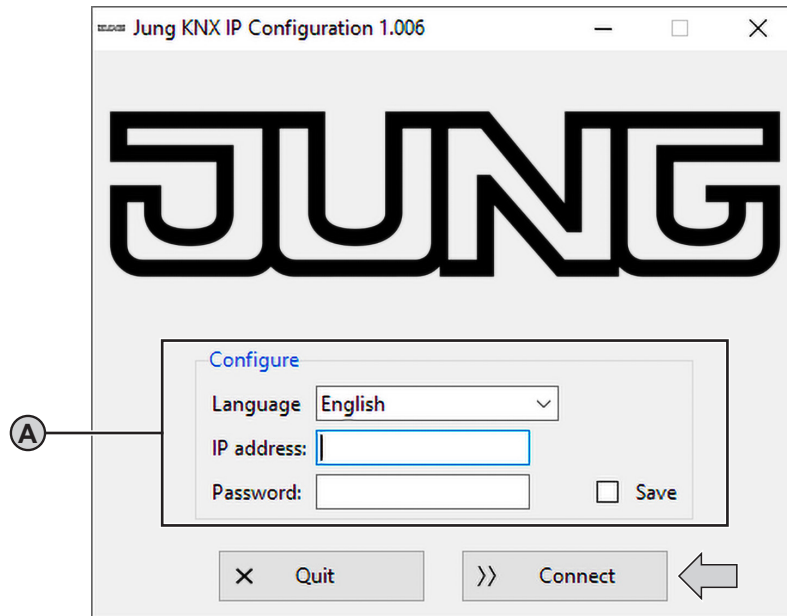


Fig. 1: Geräteverbindung

### 1.2 Requirements:

- device connected and booted
- configuration tool started

#### Configure (A)

Changing language:

- Select language.  
Configuration tool is shown in selected language.

Connecting device for device configuration:

- Enter IP address of device.  
The IP address is shown on the display of the device or can be located as follows:  
Static IP address: see ETS  
Dynamic IP address: see DHCP server
- Enter password.  
The default password is "knxsecure".  
The entered password can be saved, so it must not be entered again after the next start of the configuration tool.
- Select "Connect".  
Device is connecting.  
Device configuration is shown.

### 1.3 Device configuration

The IP router provides more configuration possibilities than the IP interface or the power supply with IP interface.

Therefore the following figure exemplarily shows the configuration of the IP router only.

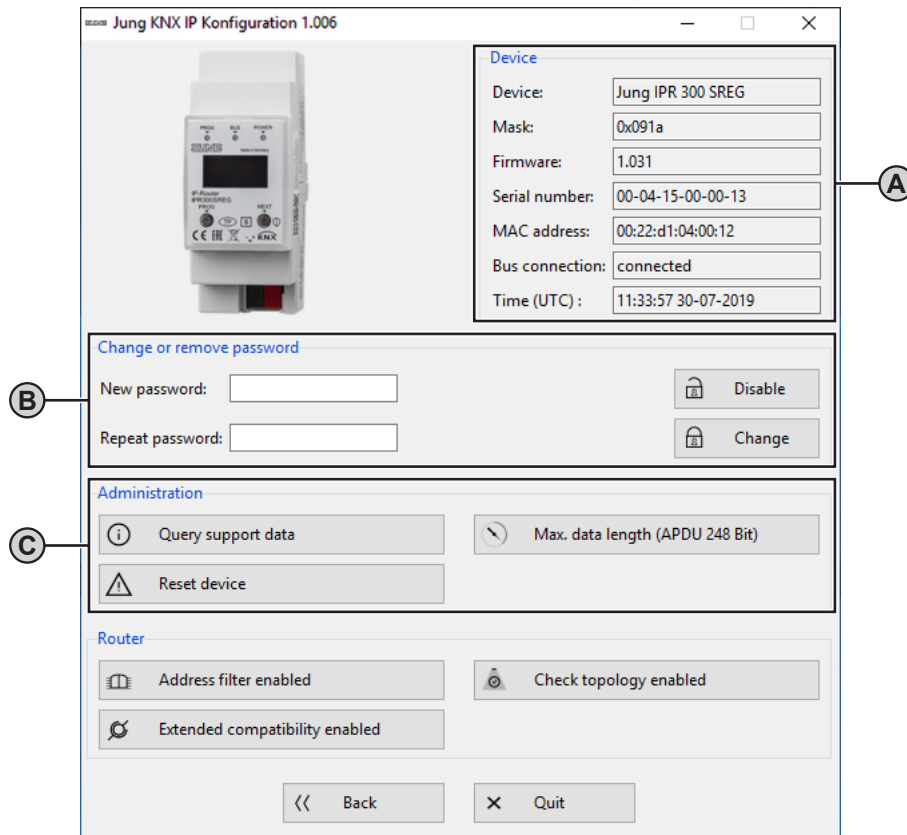


Fig. 2: Device configuration – IP router, IP interface and power supply with IP interface

Requirement:

- device connected

#### Device (A)

Shows current properties of the device.

#### Change or remove password (B)

Changing password:

- Enter new password and repeat input.
  - Confirm new password with “Change”.
- Password is changed.

Removing password:

- Select “Disable”.
- Password is removed.

#### Administration (C)

Saving device information for error correction:

- Select “Query support data”.
- A text file with device information is saved in the main folder of the software.  
Example path: C:\Programs\ConfigTool\

Performing master reset for restoring of default settings:

- Select “Reset device”.
- Master reset is performed.  
Configuration tool is restarting.

Selecting min. / max. length of telegrams for error correction of third party products:

- Select “Max. data length (APDU 248 Bit)” or “Min. data length (APDU 55 Bit)”.
- Telegram length is adjusted.

## 2 IP router

### 2.1 Device configuration

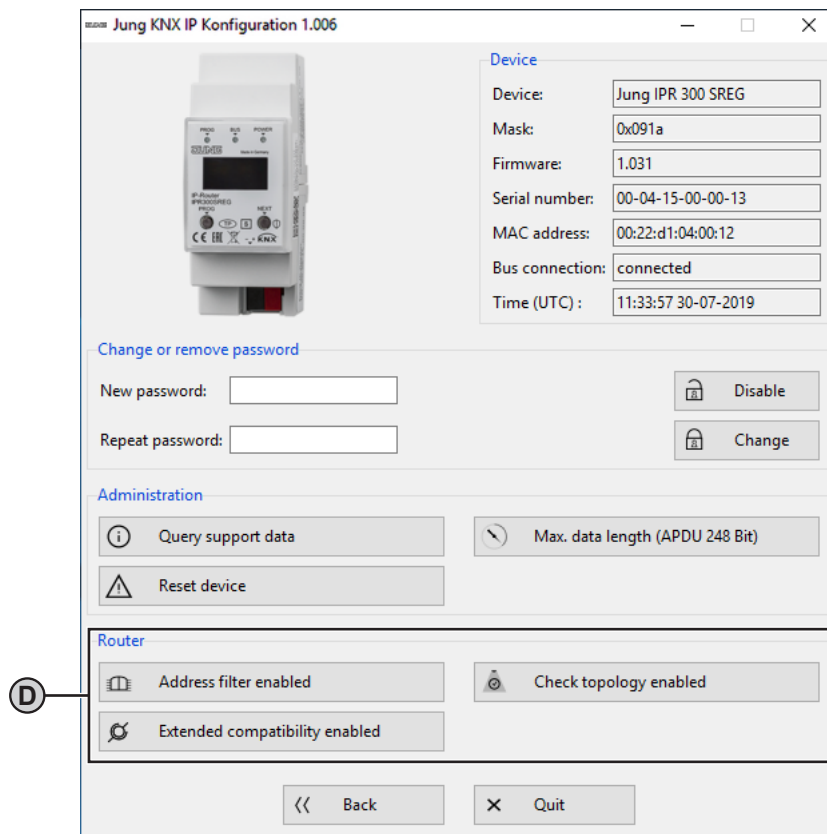


Fig. 3: Device configuration – IP router

#### Router (D)

**i** This area will only be shown, if the configuration tool is connected with an IP router.

Deactivating address filters temporary for error correction:

- Select “Address filter enabled”.  
Address filters are deactivated.
- Correct cause of error.
- Select “Address filter disabled”.  
Address filters are activated.

Checking physical addresses of all devices in the line:

- Select “Check topology enabled”.  
All devices in the line are checked.  
Incorrect physical address is shown in telnet interface, on the display of the device and is saved in the text file with device information.  
Telegram is forwarded independent of address filters.

Improving compatibility to third party products:

- Select “Extended compatibility enabled”.  
Compatibility to third party products is improved.